

RP4b



A medium duty threshold plate with integral sill gasket for use in conjunction with Raven door bottom seals.

Location: Door sill.

Finish: Satin clear (silver) or bronze anodised aluminium (25µm).

Fixing: Screw fix. Zinc plated, cross recess head CSK S.T. screws supplied. Fixing holes are pre-punched and countersunk.

Seal: RP404a. Grey flexible PVC.

Sizes: Available in stock lengths.

Approvals

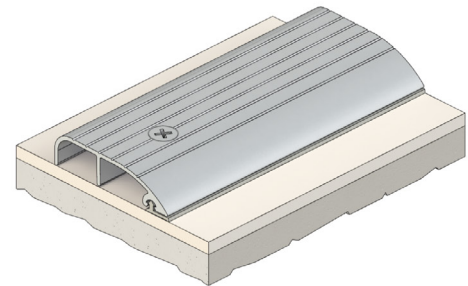
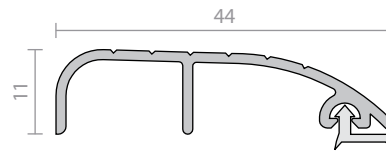
Access & Mobility NZ: NZ BC Compliance Doc. D1/AS1 1.3.2.
UK/EU: Approved Document M.

Fire AUS/NZ: NCC Spec. C3.4. AS1530.4 & AS/NZS 1905.1. NZ BC Compliance Doc. C/AS1 6.19.2(a) & App. C6.1.1.

UK/EU: Approved Document B. BS 476 Pt. 20 & 22 (similar to BS EN 1634-1).

FRL & FRR-/240/30.

BAL ≤FZ when used with a BAL rated door bottom seal in accordance with AS 3959.



RP13, RP82



Low profile threshold plates that are ideal for use in conjunction with Raven door bottom seals to prevent rain, draughts, noise and smoke infiltration.

Location: Door sill.

Finish: Satin clear (silver) or bronze anodised aluminium (25µm).

Fixing: Screw fix or builders adhesive for concealed fixing (user determined). Colour matched zinc plated, cross recess head CSK S.T. screws supplied.

Sizes: Available in stock lengths.

Approvals

Cert. GVI.R37913

Access & Mobility AUS/NZ: NCC D2.15 & D3.3. AS1428.1. NZ BC Compliance Doc. D1/AS1 1.3.2.
UK/EU: Approved Document M.

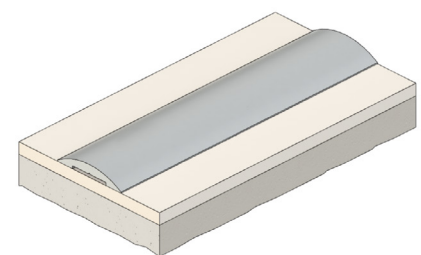
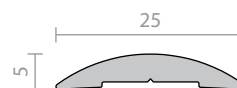
Fire AUS/NZ: NCC Spec. C3.4. AS1530.4 & AS/NZS 1905.1. NZ BC Compliance Doc. C/AS1 6.19.2(a) & App. C6.1.1.

UK/EU: Approved Document B. BS 476 Pt. 20 & 22 (similar to BS EN 1634-1).

FRL & FRR-/240/30.

BAL ≤FZ when used with a BAL rated door bottom seal in accordance with AS 3959.

RP13



RP82

